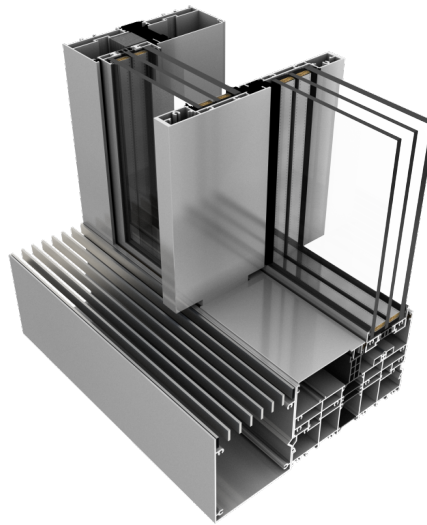


DA-SkyLine Sliding Patio Doors



Specification

Thermal efficiency	
U _w *: Coefficient value for reference design	from 0,85* W/(m ² K)
U factor*:	0,15* Btu/h·ft ² ·F
*:	for doors with sash dimensions of 2070 x 3444 mm, with a triple-glazed filling with a U _g coefficient of 0.5 W/(m ² K) and a warm edge spacer
Profile	
Profile name:	DA- Skyline
Installation depth:	Sash: 71 mm Frame: 190 mm (2-rail) i 292 mm (3-rail)
Number of chambers:	3
Thermal break:	yes
Number of seals:	2
Glass	
Glazing package:	6ESGx16x6ESGx16x6ESG
U _g value:	0,5 W/m ² K
Glazing Package Thickness:	glazing range from 52 mm to 60 mm
Sound insulation of available glazing:	R _w : from 31 to 47 dB
Technical parameters	

Watertightness:	up to class 9A (600Pa), EN 12208
Air permeability:	class 3, EN 12207
Wind load resistance:	up to class C5 (2000Pa), EN 12210

Description

TEST

Photos

